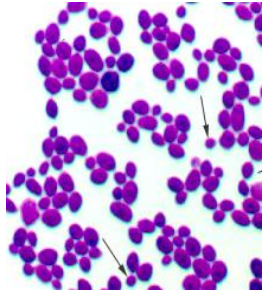


Fungi



are unicellular fungi

are multicellular fungi

Prokaryote or Eukaryote

Can reproduce using

This type of
Reproduction is

And can only
Reproduce
Using

Are

Can also reproduce

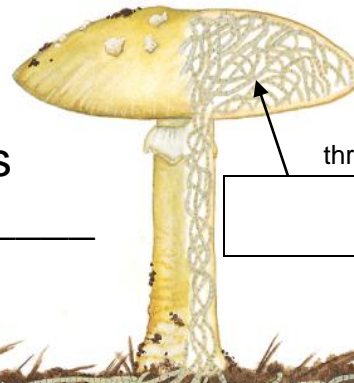
Can spread using

Structure

Have cell walls
Made of

Because they do not make their own food

They obtain their food using



threads

Above ground

underground

Word Bank

- Hyphae
- Mycelium
- Fruiting Body
- Heterotrophs
- Budding
- Spores
- Asexual
- Sexually
- External absorption
- Yeast
- Mushrooms
- Eukaryote
- Chitin

Animalia

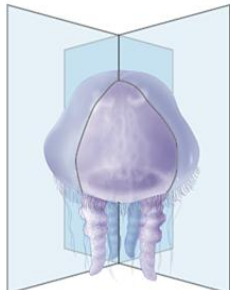
All animals are _____

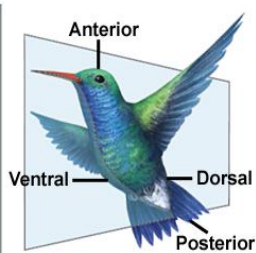
 And

_____ Using egg and sperm

_____ Using regeneration, Budding, and fragmentation







Reproduce

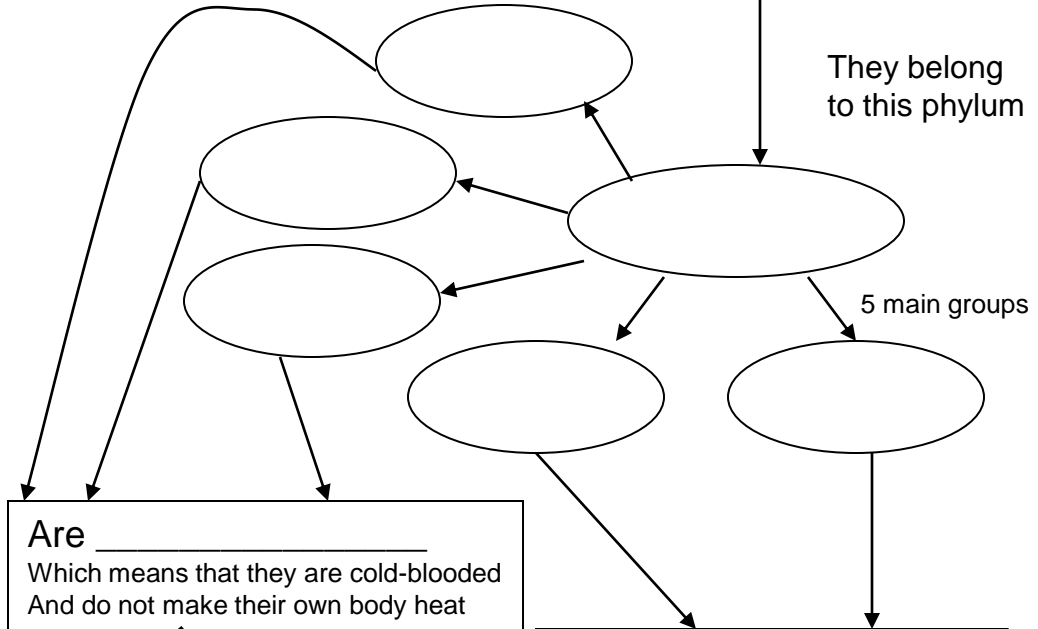
Have 3 types of symmetry

Animals without a Backbone are Called _____

Animals with a backbone Are called _____

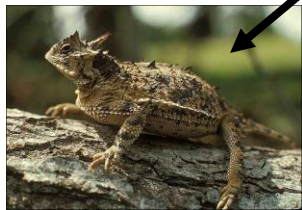
All have an _____ Which means they An internal skeleton

They belong to this phylum



Are _____ Which means that they are cold-blooded And do not make their own body heat

Are _____ Which means that they are warm-blooded And make their own body heat



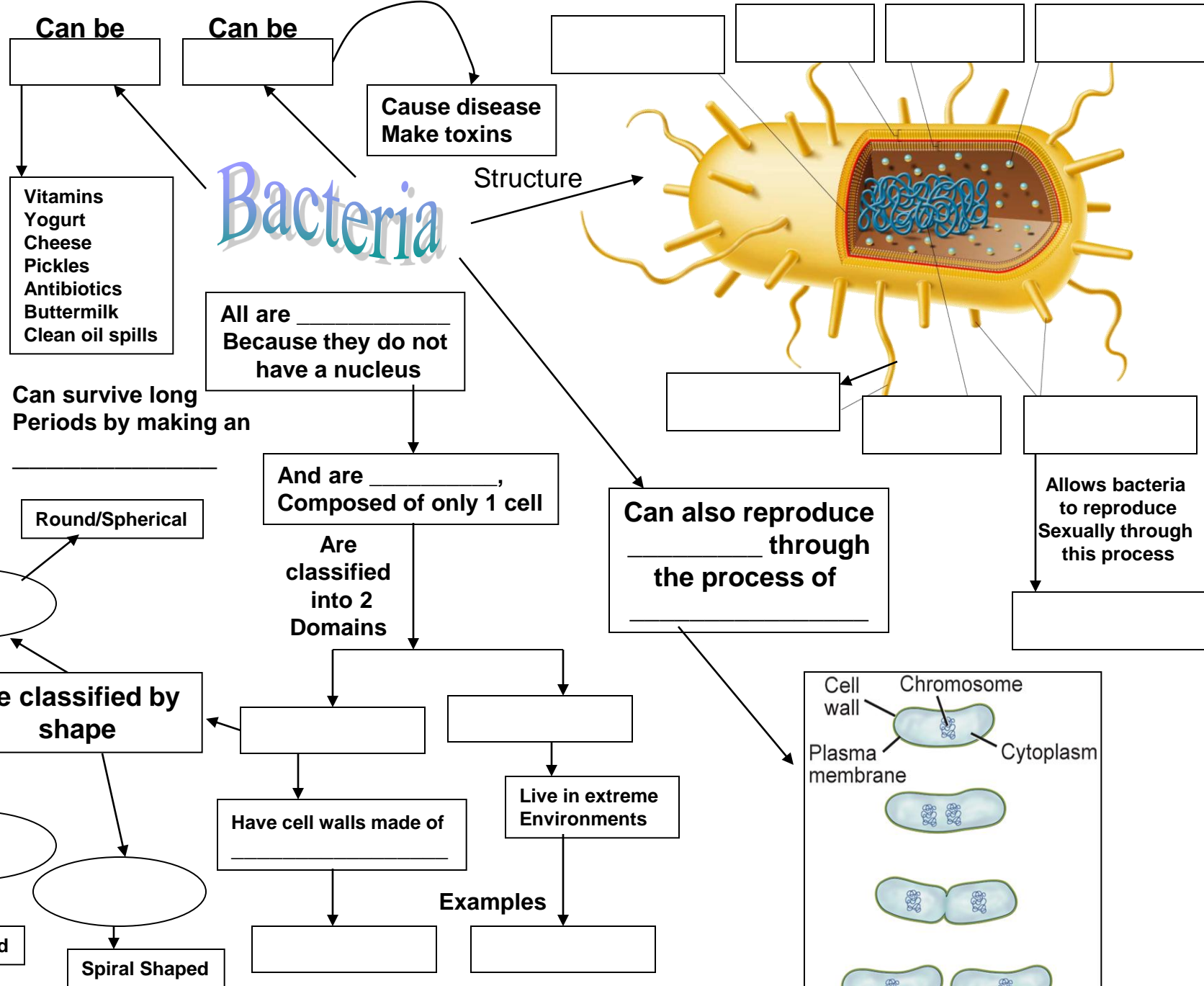
Word Bank

- | | | |
|---------------|--------------|------------|
| Endoskeleton | Endothermic | Birds |
| Exoskeleton | Ectothermic | Amphibians |
| Multicellular | Asexually | Reptiles |
| Heterotrophic | Sexually | Mammals |
| Vertebrates | Bilateral | Fish |
| Invertebrates | Asymmetrical | |
| Chordata | Radial | |

Word Bank

- Unicellular
- Prokaryotic
- Eubacteria
- Archaeobacteria
- Asexually
- Conjugation
- Binary Fission
- Flagella
- Pili
- DNA (nucleoid)
- Capsule
- Ribosome
- Cell Membrane
- Cell Wall
- Coccus
- Bacillus
- Spirillum
- Peptidoglycan
- E.Coli*
- Extremophiles
- Harmful
- Helpful
- Endospore

Bacteria



Can be

Can be

Cause disease
Make toxins

Vitamins
Yogurt
Cheese
Pickles
Antibiotics
Buttermilk
Clean oil spills

All are _____
Because they do not
have a nucleus

Can survive long
Periods by making an

Round/Spherical

And are _____,
Composed of only 1 cell

Are
classified
into 2
Domains

Can also reproduce
through
the process of

Allows bacteria
to reproduce
Sexually through
this process

Are classified by
shape

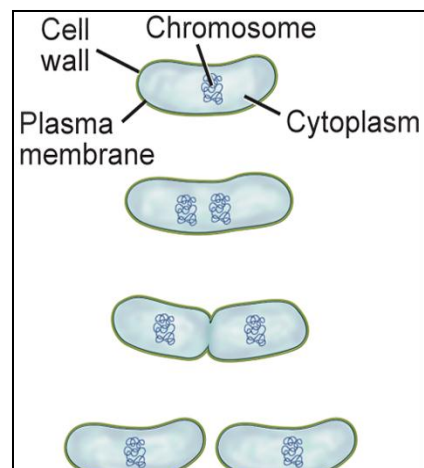
Rod Shaped

Spiral Shaped

Have cell walls made of

Live in extreme
Environments

Examples



Are _____ because their cells have a nucleus.

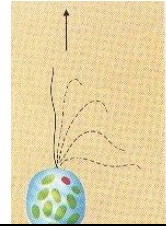
Word Bank

- Unicellular
- Multicellular
- Pseudopods
- Cilia
- Flagella
- Ameoba
- Paramecium
- Red tides
- Slimemold
- Malaria
- Algae
- Eukaryotic
- Plantlike
- Animal Like
- Fungus Like

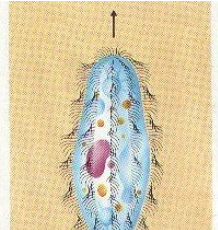
Protista

Can be _____ or _____

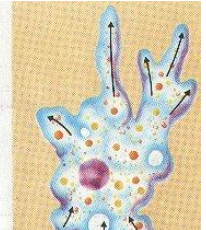
Flagellates



Ciliates



Sarcodines



Classified by what they eat

autotroph

heterotrophs

[Blank box]

[Blank box]

[Blank box]

Example

Example

Examples

[Blank box]

[Blank box]

[Blank box]

[Blank box]

Classified by movement



Sporozoans don't move on their own

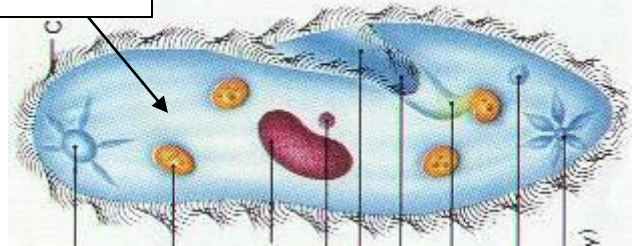
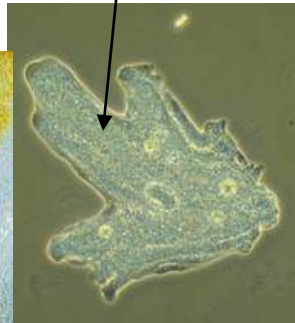
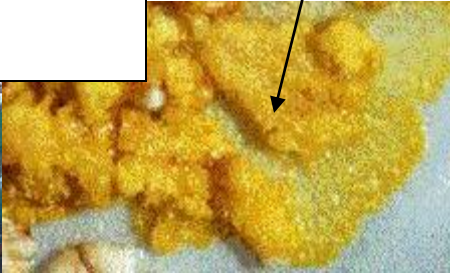
Plasmodia causes this disease



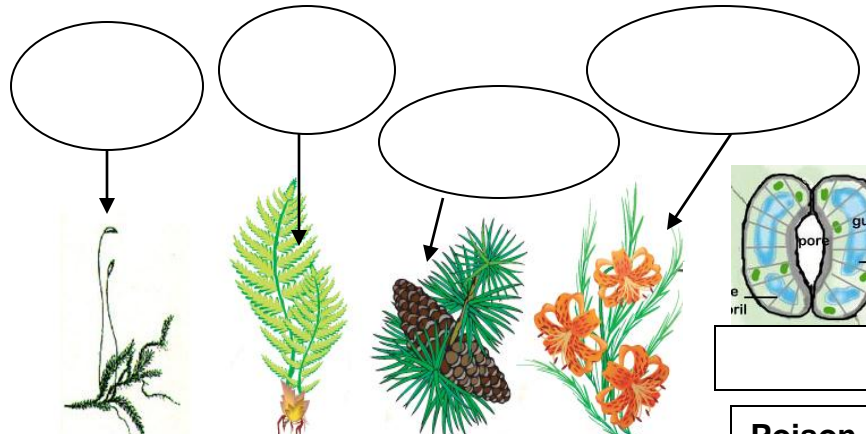
[Blank box]

Some cause

[Blank box]



Plantae



Are _____, Composed of more than one cell

Have a nucleus

Are

That use

Controls gas Exchange in plants

When plants grow toward a stimulus

To make glucose Using the sun's energy And this organelle

Adaptations

Poison Thorns

For

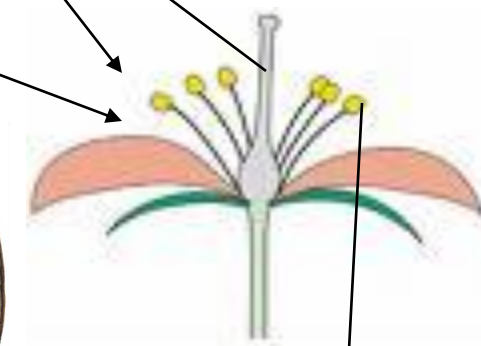
Use _____ to reproduce

Plants can also reproduce using clippings & tissue culture

For

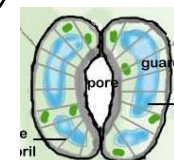
For reproduction

_____ are female Reproductive organs



_____ are male Reproductive organs

- Word Bank**
- Multicellular
 - Eukaryotic
 - Autotrophs
 - Sexually
 - Asexually
 - Ferns
 - Mosses
 - Gymnosperms
 - Angiosperms
 - Tropism
 - Stomata
 - Chloroplasts
 - Seed dispersal
 - Pollination
 - Defense
 - Photosynthesis
 - Xylem
 - Phloem
 - Seed coat
 - Embryo
 - Endosperm
 - Pistil
 - Stamen
 - Germination
 - cellulose

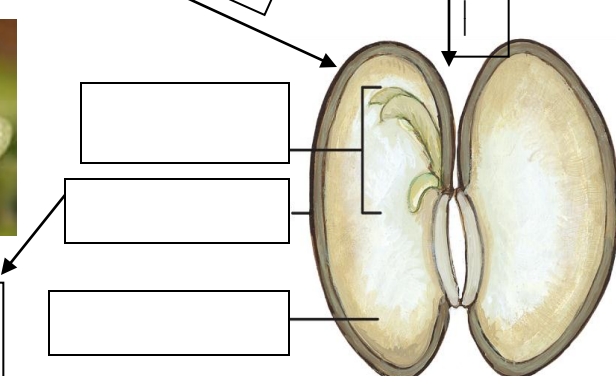


Poison Thorns

For

Use _____ to reproduce

Plants can also reproduce using clippings & tissue culture



_____ carries water From roots to leaves

_____ carries food From leaves to roots



Have cell walls Made of _____

When water penetrates this And the embryo breaks open It is called _____

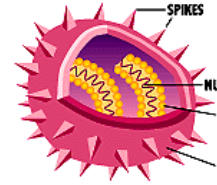
Viruses

Characteristics of Life (circle the ones viruses exhibit)

- Made of cells
- Can reproduce
- Based on genetic code
- Grow & develop
- Need energy
- Respond to stimuli
- Maintain homeostasis
- Evolve

Word Bank

- Nonliving
- Lytic Cycle
- Lysogenic Cycle
- Tail fibers
- Protein head (capsule)
- Tail
- Genetic material
- DNA
- RNA
- Retrovirus
- Gene therapy

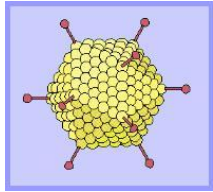


Viruses are considered

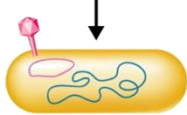
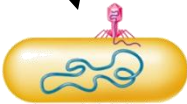
Viral Reproduction

Used in Biotechnology for

Structure of a T4 Bacteriophage

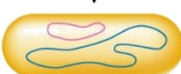
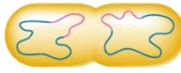
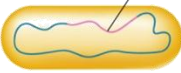


Bacteriophage injects DNA into bacterium





Bacteriophage DNA inserts itself into bacterial chromosome



Prophage

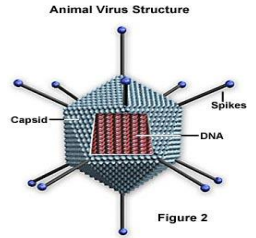


Figure 2

Can be made of

A virus with This type of Genetic material Is called a

